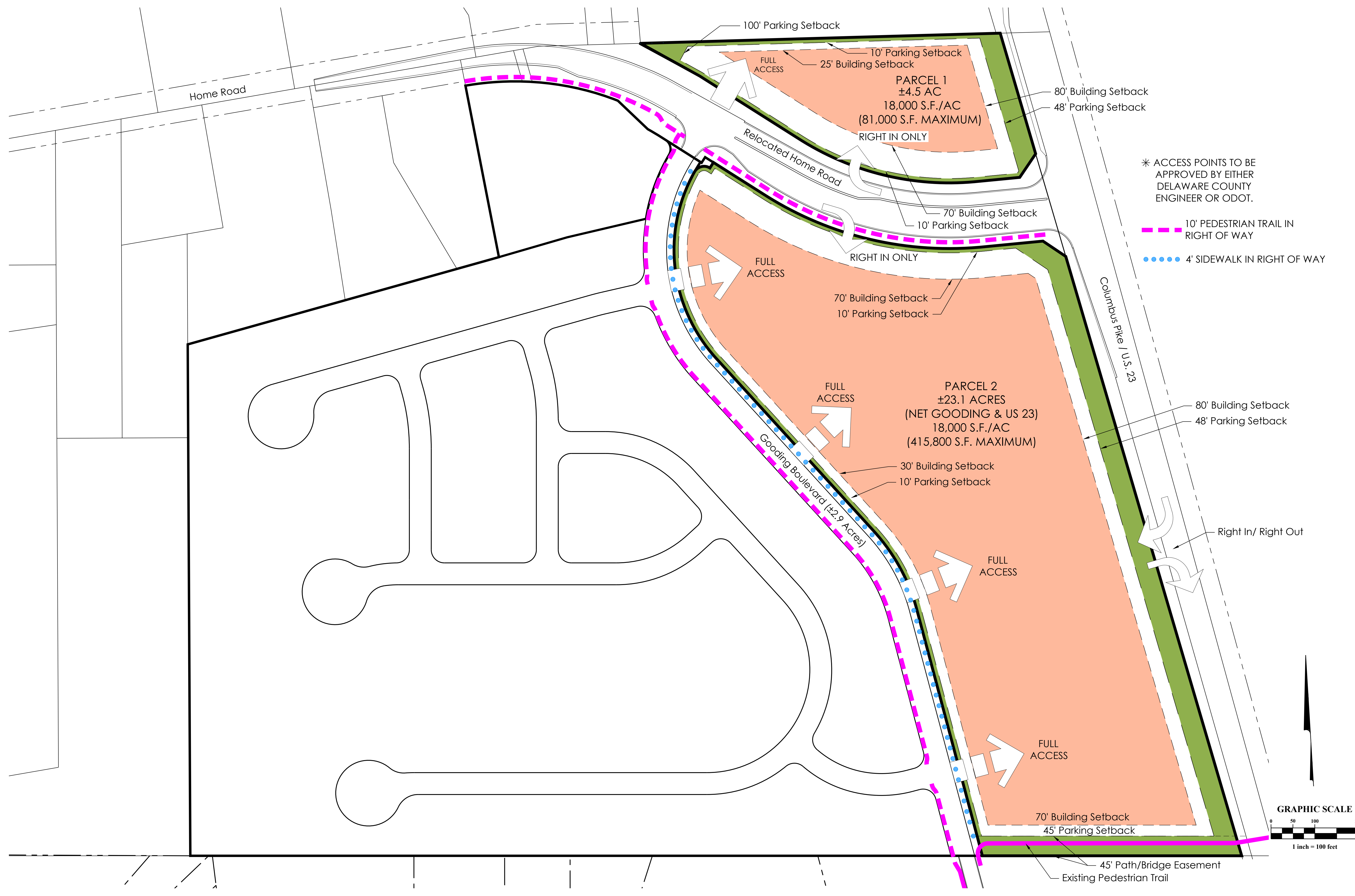
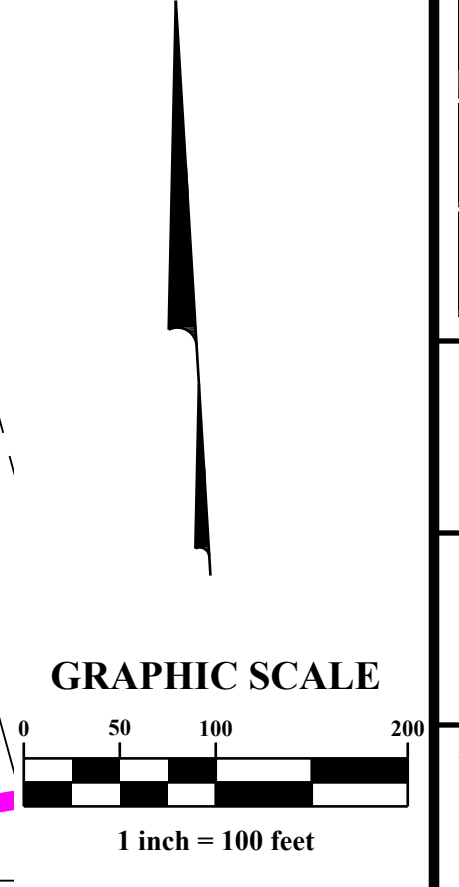


I:\work\2018\120151566\Drawings\04\Sheets\development\plan\3 Maximum Building Heights Plan.dwg, Last Saved By: flick, Andrew, Last Printed By: flick, Andrew, 7/17/2018 1:16 PM



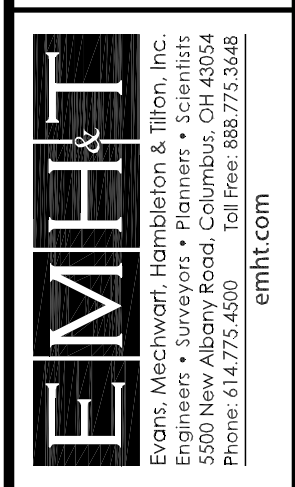
- * ACCESS POINTS TO BE APPROVED BY EITHER DELAWARE COUNTY ENGINEER OR ODOT.
- 10' PEDESTRIAN TRAIL IN RIGHT OF WAY
- 4' SIDEWALK IN RIGHT OF WAY



MARK	DATE	DESCRIPTION

HOME HIGH, LLC

DELAWARE COUNTY, OHIO
**CLEAR CREEK - PLANNED
 COMMERCIAL AND OFFICE DISTRICT**
SETBACKS, DENSITY AND ACCESS PLAN



DATE: JULY 17, 2018
 SCALE: 1" = 100'
 JOB NO.: 20151566